

PLAT OF
PLAT NO. 6 LOBLOLLOLY BAY, A P.U.D.

P.U.D. PHASE 10
BEING A REPLAT OF A PORTION OF PARCEL "D", LOBLOLLOLY BAY, A P.U.D., RECORDED
IN P.U.D. PLAT BOOK 1, PAGE 14, AND A PORTION OF LOT 32, GOMEZ GRANT, PLAT
BOOK 1, PAGE 80, TOWNSHIP 39 SOUTH, RANGE 42 EAST, MARTIN COUNTY, FLORIDA

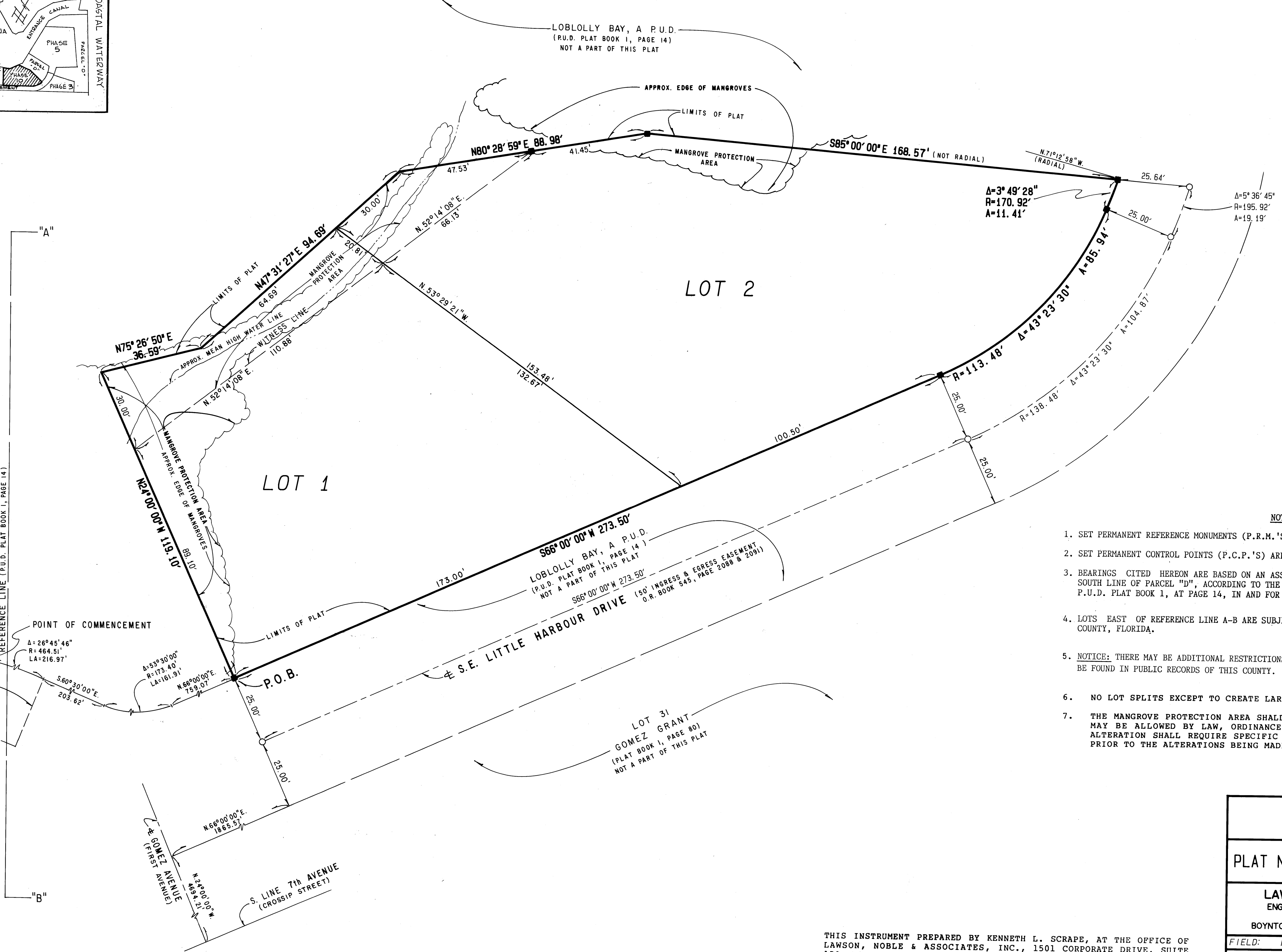
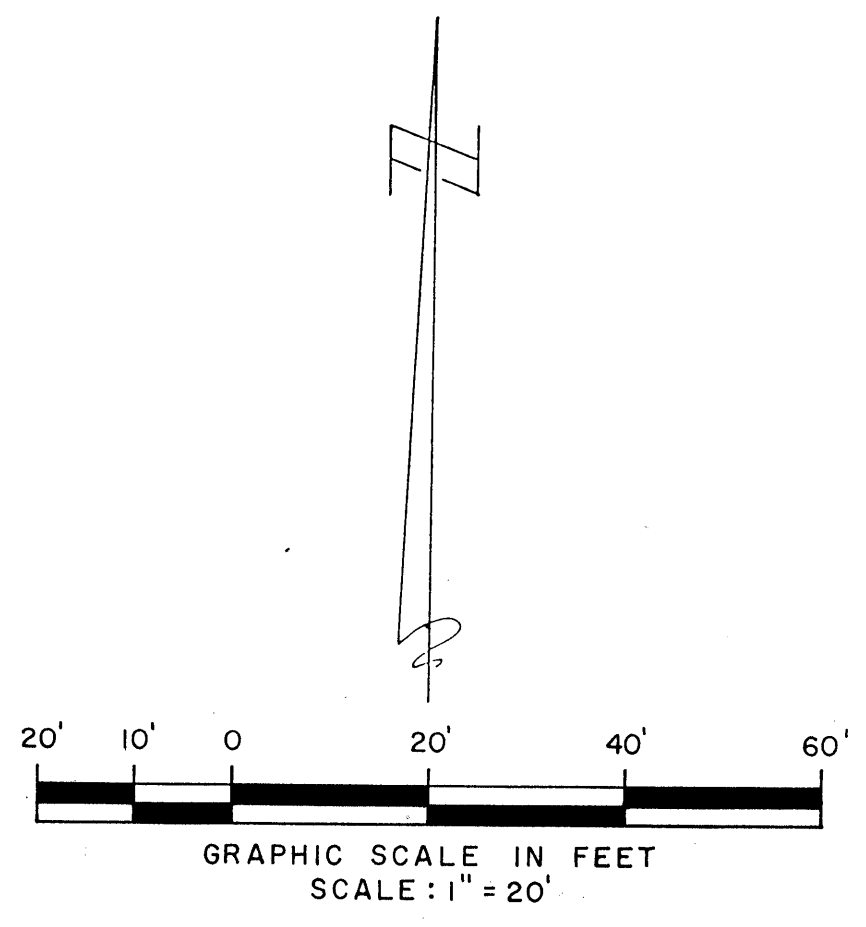
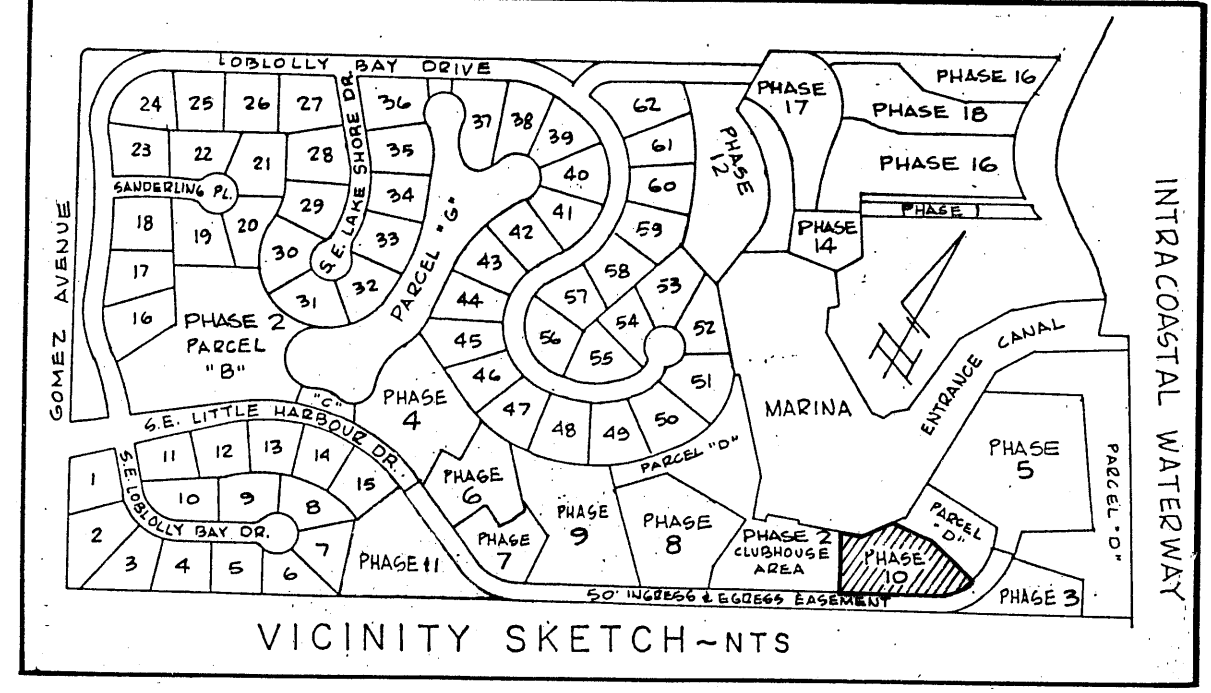
JAN., 1989 SHEET 2 OF 2

I, MARSHA A. STILLER, CLERK OF THE
CIRCUIT COURT OF MARTIN COUNTY,
FLORIDA, HEREBY CERTIFY THAT THIS
PLAT WAS FILED FOR RECORD IN
PLAT BOOK 11, PAGE 83,
MARTIN COUNTY, FLORIDA, PUBLIC
RECORDS, THIS _____ DAY OF
_____, A.D., 1989.

MARSHA A. STILLER, CLERK
CIRCUIT COURT
MARTIN COUNTY, FLORIDA

BY: _____
DEPUTY CLERK

FILE NO.: _____



- NOTES
- 1. SET PERMANENT REFERENCE MONUMENTS (P.R.M.'S) ARE DESIGNATED THIS:
 - 2. SET PERMANENT CONTROL POINTS (P.C.P.'S) ARE DESIGNATED THIS:
 - 3. BEARINGS CITED HEREON ARE BASED ON AN ASSUMED BEARING OF SOUTH 66°00'00" WEST ALONG THE SOUTH LINE OF PARCEL "D", ACCORDING TO THE PLAT OF LOBLOLLOLY BAY, A P.U.D., AS RECORDED IN P.U.D. PLAT BOOK 1, AT PAGE 14, IN AND FOR THE PUBLIC RECORDS OF MARTIN COUNTY, FLORIDA.
 - 4. LOTS EAST OF REFERENCE LINE A-B ARE SUBJECT TO RESTRICTIONS OF RECORD OF MARTIN COUNTY, FLORIDA.
 - 5. NOTICE: THERE MAY BE ADDITIONAL RESTRICTIONS THAT ARE NOT RECORDED ON THIS PLAT THAT MAY BE FOUND IN PUBLIC RECORDS OF THIS COUNTY.
 - 6. NO LOT SPLITS EXCEPT TO CREATE LARGER LOTS.
 - 7. THE MANGROVE PROTECTION AREA SHALL NOT BE ALTERED EXCEPT AS MAY BE ALLOWED BY LAW, ORDINANCE OR REGULATION, AND WHICH ALTERATION SHALL REQUIRE SPECIFIC APPROVAL OF MARTIN COUNTY PRIOR TO THE ALTERATIONS BEING MADE.

PLAT OF		
PLAT NO. 6, LOBLOLLOLY BAY, P.U.D.		
LAWSON, NOBLE & ASSOCIATES, INC. ENGINEERS PLANNERS TESTING SURVEYORS 1501 CORPORATE DRIVE SUITE 150 BOYNTON BEACH, FLORIDA 33426 PH: (407) 736-9944		
FIELD: K.N.	OFFICE: K.S.	CK'D: K.S.
JOB NO: 88-281	DATE: JAN., 1989	DWG. NO: C88-56
JF: 29 DC: 46	FB: MC-7 PG: 37	SHEET 2 OF 2

THIS INSTRUMENT PREPARED BY KENNETH L. SCRAPE, AT THE OFFICE OF
LAWSON, NOBLE & ASSOCIATES, INC., 1501 CORPORATE DRIVE, SUITE
150, BOYNTON BEACH, FLORIDA 33426